



Wireless Headset with Bluetooth® technologies (Model: IP8502)

for Microsoft® Office Communicator 2007



⚠ This symbol identifies safety and health messages in this Product Guide and other manuals.

Read this manual for important safety and health information and the terms of the Warranty that cover the LG-Nortel® device that you have purchased.

⚠ WARNING

Failure to properly set up, use, and care for this product can increase the risk of serious injury or death, or damage to the device or devices. Read this Product Information Guide and keep all manuals for future reference.

⚠ Disposal of Waste Electrical & Electronic Equipment in the European Union and Other Countries with Separate Collection Systems

This symbol on the product or its packaging means that this product must not be disposed of with your household waste. Instead, it is your responsibility to hand this over to an applicable collection point for the recycling of electrical and electronic equipment. This separate collection and recycling will help to conserve natural resources and prevent potential negative consequences for human health and the environment due to the possible presence of hazardous substances in electrical and electronic equipment, which could be caused by inappropriate disposal. For more information about where to drop off your electrical and electronic waste, please contact your local city or municipality office, your household waste disposal service, or the shop where you purchased this product.



⚠ DO NOT ATTEMPT REPAIRS

Do not attempt to take apart, open, service, or modify the LG-Nortel *Bluetooth*® Headset. Doing so increases the risk of electric shock, fire, or damage to the device. Any evidence of an attempt to open or modify any component of the USB Phone system, including any peeling, puncturing or removal of any of the labels, is a violation of your license and warranty, and renders USB Phone ineligible for authorized repair.

If any part is damaged, malfunctioning, or if any internal parts become visible, contact LG-Nortel Support Center (<http://www.lg-nortel.com/>)

What's new in this release

Initial Product Release : 2007 Oct. ISSUE 1.0

Copyright© 2007 LG-Nortel Co. Ltd. All Rights Reserved

This material is copyrighted by LG-Nortel Co. Ltd. Any unauthorized reproductions, use or disclosure of this material, or any part thereof, is strictly prohibited and is a violation of Copyright Laws. LG-Nortel reserves the right to make changes in specifications at any time without notice. The information furnished by LG-Nortel in this material is believed to be accurate and reliable, but is not warranted to be true in all cases.

LG-Nortel is a trademark of LG-Nortel Co. Ltd.

All other brand and product names are trademarks or registered trademarks of their respective companies.



Microsoft UC Logo mark owned by Microsoft and LG-Nortel is using under license agreement

Table of contents

Introducing LG-Nortel's Wireless Headset 8502	1
<i>Overview</i>	1
Getting your IP8502 up and running.....	2
<i>What's in the Box</i>	2
<i>Usage and Cleaning</i>	2
Setup and Configuration.....	3
<i>System Requirements</i>	3
<i>Setting up the Headset</i>	5
<i>Configuring Office Communicator 2007 for Use with the IP 8502</i>	6
<i>Start Office Communicator 2007</i>	6
<i>Verify your audio setup</i>	6
<i>Verify your phone integration settings</i>	6
<i>Pairing the Wireless Headset to a Mobile Device</i>	7
Using Office Communicator with Wireless Headset 8502.....	8
<i>Placing Calls</i>	8
<i>Placing a voice call</i>	8
<i>Using search to call a contact</i>	9
<i>Making a voice call by typing a phone number in the Search box</i>	9
<i>Making a voice call to multiple contacts</i>	9
<i>Receiving Calls</i>	10
<i>Accepting a voice call</i>	10
<i>Declining a voice call</i>	11
<i>Responding to a voice call with an instant message</i>	11
<i>Setting your status to Do Not Disturb from a voice call notification</i>	11
<i>Redirecting a call to another number, device, or voice mail</i>	11
Recharging the LG-Nortel IP8502 Headset	12
<i>Recharging the Headset</i>	12

Introducing LG-Nortel's Wireless Headset 8502

Overview

LG-Nortel Wireless Headset 8502 (Model IP8502) allows you to extend the audio calling functions of Office Communicator to an external wireless device that fits on your ear. This headset includes both an earphone-style miniature speaker and a microphone, allowing you the freedom of hands-free wireless communication as you use Office Communicator to place and receive calls.



Getting your IP8502 up and running

What's in the Box

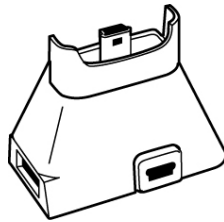
LG-Nortel IP8502 product package contains the following items:



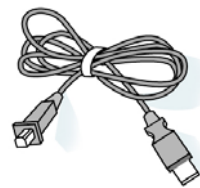
1. *Bluetooth*® Headset (IP8502)



2. USB Dongle for IP8502 (IP8502UG)



3. Docking Station IP8502DS



4. Mini USB Cable IP8502DS

NOTE—Two different-sized ear hooks are included to ensure a good fit for most customers.

Usage and Cleaning

Use in accordance with these instructions.

- Do not use near any heat sources.
- Only use attachments/accessories specified by LG-Nortel.
- Clean only with a dry cloth.

Setup and Configuration

System Requirements

The following are the minimum system requirements for using the Wireless Headset 8502:

- Computer running Microsoft® Windows® XP operating system (SP2 or later).
- Computer with at least 1.8 GHz processor.
- Recommended at least 1.0 GB of RAM.
- 1.5 GB of available hard disk space.
- Video card with at least 64 MB of RAM.
- Super VGA (1280 × 1024) resolution video adapter and monitor.
- Keyboard and mouse, or compatible pointing device.
- Ethernet network adapter appropriate for the type of local-area or wide-area network in use.
- Graphics hardware running in full hardware acceleration mode.
- A half-duplex or full-duplex sound card. Half-duplex audio allows only one person to speak at a time. Full-duplex audio allows two people to speak simultaneously.
- Office Communicator 2007 installed and compatible according to the following specifications:

Table 1. Office Communicator 2007 Compatibility List

Operating System	Outlook Version	Exchange Server Version
Microsoft Windows® XP SP2	Microsoft Office Outlook® 2007 Outlook 2003 SP2 Outlook XP	Exchange 12 Exchange 2003 Exchange 2000
Microsoft Windows Server™ 2003 SP1, or later	Outlook 2007 Outlook 2003 SP2	Exchange 12 Exchange 2003
Windows 2000 Professional SP4, or later	Outlook 2003 SP2	Exchange 12 Exchange 2003

LG-Nortel Wireless Headset 8502
User Guide

Table 2. Product Specifications

Component	Description
Headset	Left/Right ear compatible
Button	Volume Up/Down
Multi-function Button	Power ON/OFF and Call Control
Headset LED	White LED – indicates connection & communication status Green LED – indicates power & charging status
Dongle LED	White LED – indicates connection & communication status Presence Icon – multi-color, displays presence status
Bluetooth Compliant	Headset supports Wideband speech profile Headset/Handset Profile
USB	USB 2.0 Compliant Dongle Full speed (12 Mbps) device Emulation of USB Audio devices (Microphone/Speaker) Requires no Bluetooth stack on PC USB HID to support buttons & LEDs
Battery	Rechargeable Li-Polymer Battery Talk Time: 8 hours Standby Time: 3 days USB Recharging via mini-USB port
Dongle Power	USB Bus Powered, meeting USB specifications
Audio	Full-duplex, wideband (16-bit, 16,000 samples per second) audio Audio is compressed for transmission via Bluetooth, using the SBC codec. Operation temperature : 0 ~ 40 degree Celsius Storage temperature : -20 ~ 60 degree Celsius Operation humidity : 10 ~ 85 %RH (Note : non-condensing)

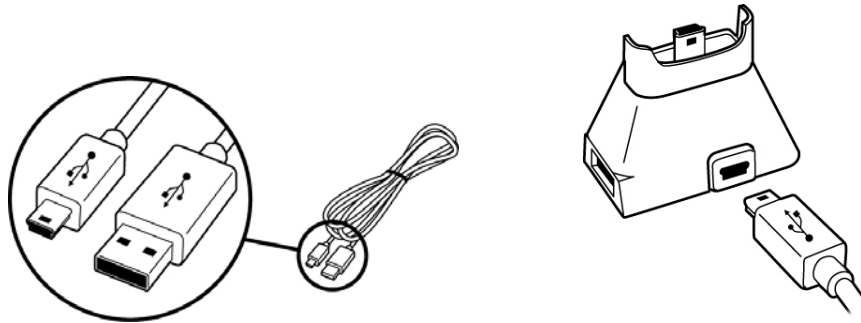
Table 3. Environmental Specifications

Item	Degrees (°C)	Degrees (°F)
Operation Temperature	0-40	32-104
Storage Temperature	-20-60	-4-140
Operation Humidity	10-85% RH (non-condensing)	

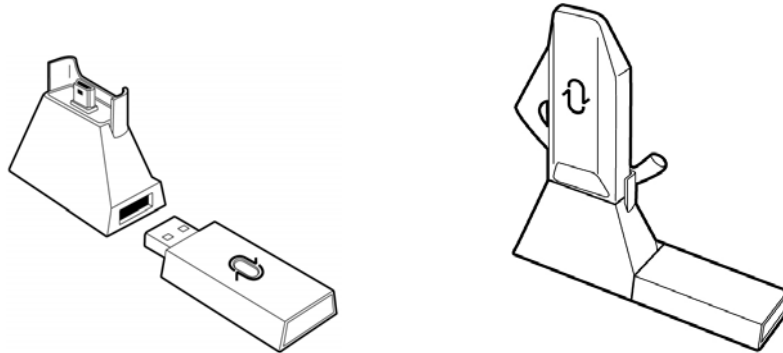
Setting up the Headset

To set up the IP8502 with *Bluetooth®* capability, perform the following Steps:

1. Use the USB 2.0 cable to connect the mini-USB port on the dock unit to a USB port on the computer where you have installed Office Communicator 2007.



2. Insert the appropriate ear hook into the wireless headset (left or right facing, depending on which ear you intend to use it in), then plug the wireless *Bluetooth®* Headset unit into the docking station and charge the headset (using your computer's AC power) for 1-2 hours.
3. While the Headset is charging, press and hold the multi-function (largest) button on the headset unit until the white LED indicator starts blinking.
4. Insert the USB Dongle in the USB port on the dock station.



NOTE—Optionally, you can insert the USB Dongle in a USB port on your computer.

5. When the red and green LED indicators on the USB Dongle flash in unison, the headset unit and transmitter (dongle) are paired.

NOTE—If the headset LED indicator displays a steady (not flashing) white light, or if the transmitter LED indicators do not flash in unison, the devices are not paired, and you must repeat this procedure from Step 2 through 4.


Configuring Office Communicator 2007 for Use with the IP 8502

Before using the Wireless Headset 8502, you must verify that audio is properly configured, and that Office Communicator is set to integrate with your phone system. Both of these configurations are done in Office Communicator.

Start Office Communicator 2007


1. Click **Start**
2. Select **Programs**, and click on **Microsoft Office Communicator 2007**.

Verify your audio setup

1. In the **Office Communicator** title bar, click on the down arrow  .
2. Select **Tools**, and click on **Set up Audio and Video**.
3. Follow the instructions in the **Audio Video Device Setup** wizard.
4. On the **Getting Started** page of the wizard, click **Next**.
5. On the **Speaker Setup** page, select **IP8502** in the list, and then click **Next**.
6. On the **Microphone Setup** page, select **IP8502** in the list, and then click **Next**.
7. On the **Webcam Setup** page, click **Finish**.

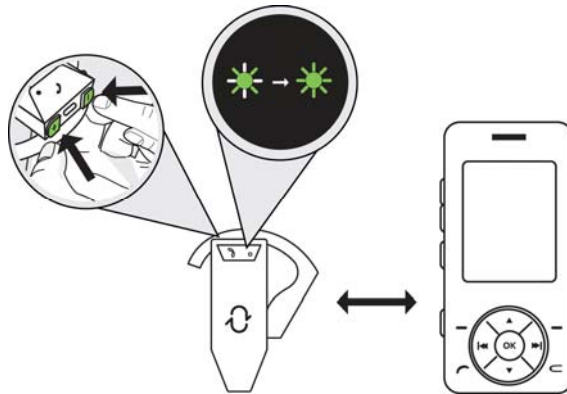
NOTE—You must complete the wizard in order to use the wireless headset.

Verify your phone integration settings

1. In the **Office Communicator** title bar, click on the down arrow  .
2. Select **Tools**, and click on **Options**.
3. In the **Options** dialog box, click on the **Phones** tab.
4. Click **OK**.

Pairing the Wireless Headset to a Mobile Device

1. Verify the dongle is disconnected from the headset while pairing headset to a mobile device; headset will not enter discoverable mode if connected with the dongle.
2. Turn ON headset by pressing and holding the multifunction button until the LED indicator illuminates solid white.
3. Press both headset volume buttons (about 5 sec.) until the LED indicator blinks alternating white and green (shown); headset is ready for pairing to mobile device.



4. Locate Bluetooth settings on mobile device and search for Bluetooth-activated devices.
5. When located, select "Microsoft OC Headset" from the list. You may be prompted to enter a PIN (0000).

NOTE—If headset is left in discoverable mode for too long without being paired with a device, it may time-out (in this case, just re-start this procedure from Step 2).

6. When headset and mobile device are connected, LED indicator will blink green.
7. To alternately switch the headset connection between the mobile device and dongle, momentarily press both headset volume buttons.

Using Office Communicator with Wireless Headset 8502

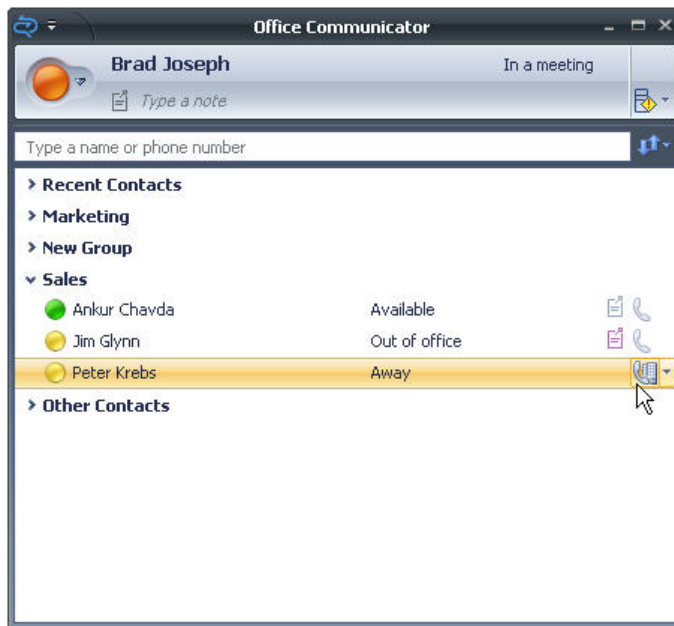
Placing Calls

With Communicator 2007 you can place an outbound voice call using the LG-Nortel IP 8502. You can call contacts inside your company by simply clicking the phone icon next to a name in the Contacts list or you can call an outside number by typing the number in the Search box.

In addition to calling a single contact, you can use Communicator to initiate a voice call with multiple contacts (conference call). It's a convenient way to start a conference call, without requiring you to have a conference call number from a conference service provider.

Placing a voice call

1. In the Contacts list, click on the Phone icon to the right of the desired contact's name to initiate a voice call using your preferred calling device and the contact's preferred number or device.



2. To change your preferred calling device or the number of device to call, click the down arrow (shown) next to the Phone icon and then click on the new name or phone number or change the selection in the Preferred Calling Device.



Using search to call a contact

1. In the **Search** box, type the first or last name of the contact or the full name of the contact. Search results will begin to display after you've partially typed in the contact's name.



2. In the **Search** results list, click the phone button to the right of the contact's name to initiate the call.



NOTE—Clicking on the arrow button next to the phone icon of a contact will allow you to select how to call the contact.

Making a voice call by typing a phone number in the Search box

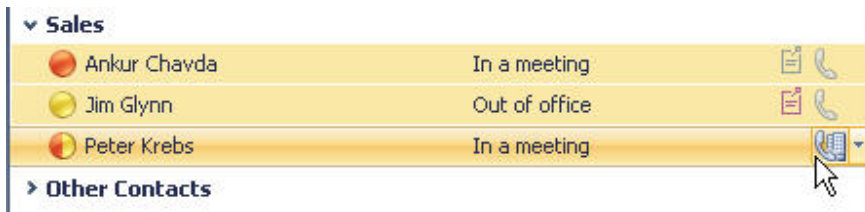
1. In the **Search** box of the Communicator window, type the desired phone number.
2. Click the phone icon next to the phone number in the **Search** results area to initiate a call to that number.



Making a voice call to multiple contacts

NOTE—To use this feature, conferencing must be enabled by the System Administrator.

1. In the **Contacts** list, hold the **CTRL** key and select the contacts you want to invite to the voice call.



2. When finished selecting contacts, right-click on one of the contacts, and select **Call with Options**.
3. Select the number you want to use to initiate the call; when number or device to start the conference is selected, the call is placed and the participants are invited to the call.

4. The Conversation window will open and show you as the leader of the conference and displays status for each of the conference call participants. For more information about conducting conference calls, refer to <Conferencing>.

Receiving Calls

When an incoming voice call is received, Communicator displays an audio popup notification in the lower right corner of your PC. The popup provides contextual information about the call, and a variety of controls for handling the call.

If **Telephone Integration** is enabled for Communicator, you will see a call notification on your PC screen. The notification displays an audio icon that indicates a voice call and shows the caller's name and phone number (if the person who is calling is inside your company).

When the audio popup notification for an incoming call appears, you can take any of the following actions:

- **Accept or decline a call.**
- **Respond with an instant message.**

There are times when it's not convenient to accept a voice call, even though you want to talk to the caller. For example, you may be in an ad-hoc meeting or in the middle of an important conversation with someone in your office. In cases such as these, you can send the caller an instant message, perhaps to indicate that you'll call them back or be available later in the day.

- **Set your presence status to Do Not Disturb for the next 30 minutes.**

There are times when your status shows you as available, but you're really in an ad-hoc meeting or having an important conversation with a co-worker. In cases such as these where you don't want to be disturbed, you can set your status to Do Not Disturb the first time you receive a voice call notification.

- **Redirect the call to another number, device, or to your voice mail.**

The voice notification popup provides a Redirect menu that you can use to redirect the call. For example, you can redirect an incoming call on your PC to your cell phone, home phone number or simply redirect the call to your voice mail.

Accepting a voice call

1. Click on the caller's name or phone number in the notification popup, the call automatically is connected to the headset.



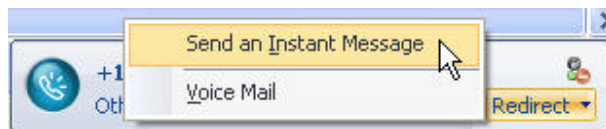
Declining a voice call

1. To decline a voice call, click the Close button in the call notification window to close the notification window and decline the call.

NOTE—If voice mail is enabled, the call automatically is redirected to voice mail.

Responding to a voice call with an instant message

1. Click the Redirect arrow, and select Send an Instant Message (as shown).
2. Type your message and then click on the Send button or press ENTER.



Setting your status to Do Not Disturb from a voice call notification

1. From the voice call notification, click the Do Not Disturb button (shown) in the upper right corner of the notification.
2. When you click the Do Not Disturb button, a popup message appears that indicates that for 30 minutes you will not be able to receive incoming communications.



Redirecting a call to another number, device, or voice mail

1. Click on the Redirect arrow in the voice notification window.
2. Select the new destination for the call.

Recharging the *LG-Nortel IP8502* Headset

The wireless Headset operates using power from a rechargeable internal battery pack. You can recharge the headset by using the included standard mini-USB power cord

Recharging the Headset

1. Connect one end of the mini-USB power cord to the mini-USB port on the headset (located between the Volume Up and Volume Down buttons).
2. Plug the other end of the power cord into a USB port on your computer.
3. The device will recharge the internal battery pack using the power supplied to your computer. When it is finished charging, unplug the USB power cord and use the device normally.
4. Alternatively, the headset also can be charged by placing it into the docking station when docking station is plugged into the computer using the USB power cord.